

PEDESTRIAN FLOOR COVERINGS IN A TANNERY

LOCATION

In Tuscany leather processing dates back to the Middle Ages. By the middle of the 18th century, leather processing was popular in the whole region. For this reason, the production of uppers, soles, shoes, saddle accessories, gloves, bags, leather goods and accessories has flourished for centuries in Valdelsa.

CLIENT

The Italian leather industry is a leader in technology and quality development and style innovation. This industry, which is made up of small and medium enterprises organized into districts, covers 66% of European production. 26,9% of the goods are exported to 121 countries.

LOCATION

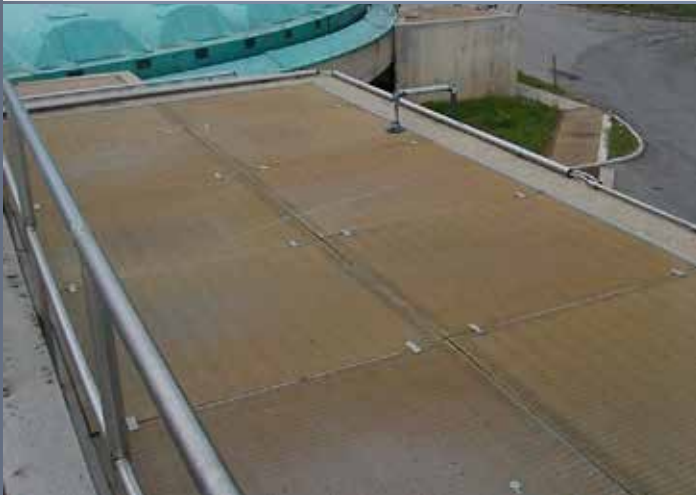
TUSCANY (ITALY)

USE

PEDESTRIAN FLOOR COVERINGS

PRODUCT

SCH 38/30_ IFR GRATINGS, SCH 38/30C_ IFR GRATINGS



OBJECTIVE

The leather production process is very complex. It entails an alternation of chemical and mechanical operations. All chemical operations up to the finishing stage are carried out with the use of water and a given amount of chemicals (surfactants, basic salts, enzymes) as well as lime and sodium sulphide. The use of aggressive agents such as lime, sodium sulphide, inorganic and organic acids, tannings containing chrome and tannin, solvents, resins, colours and pigments, greases and the presence of N-NH₄, Chlorides, sulphates and sulphides in wastewater and sludge as well as the presence of a Ph ranging from 8 to 9 require solutions and materials that are perfectly resistant to aggressions and maintain their characteristics over time.

SOLUTION

M.M. inspected the area, assessed the existing structure and designed the new structures using SCH 38/30_ IFR and SCH 38/30C_ IFR gratings. The structure of floor coverings ensures the required capacity under concentrated load conditions, limits weight and ensures slip resistance (R13 level) according to DIN 51130. Gratings with an open mesh allow full drainage while covered gratings limit the diffusion of odours. The intrinsic properties of the materials make this structure durable and resistant to any decline in its characteristics even when exposed to highly aggressive environments such as tanneries.